

Luberg

0 0.5 km

●●●●●●●● Marked trail

P Parking



Starting point: Road between Lunde and Drangedal

Approximate timetable: 2 hours

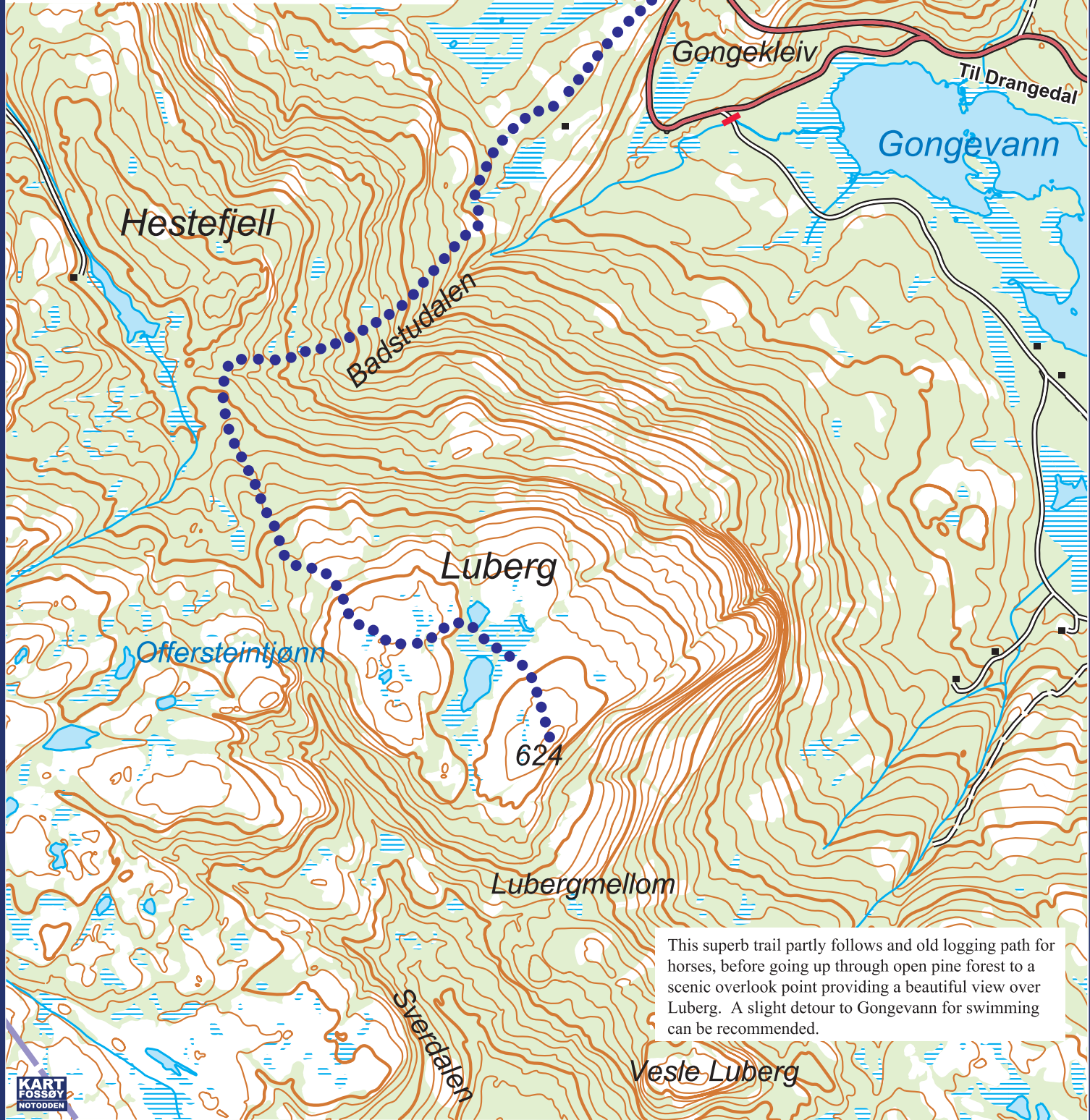
Degree of difficulty: Demanding



Active in Mid-Telemark

Trail nr. **14**

Map basis: Trailmap Nome 1: 30 000. IL Skade.



This superb trail partly follows an old logging path for horses, before going up through open pine forest to a scenic overlook point providing a beautiful view over Luberg. A slight detour to Gongevann for swimming can be recommended.